

# Integrated Care Management

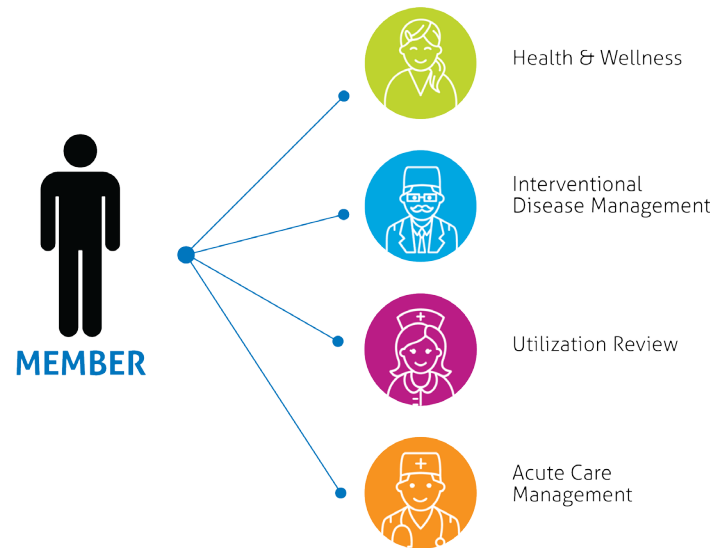
One connection for all of your members' needs

Integrated Care Management simplifies the way your members access and receive clinical support.

With pharmacists, nurses, mental health social workers, and health coaches working together, in the same location, members do not have to make multiple phone calls or explain their situations to different clinical representatives.

By integrating health and wellness, disease management, utilization review, and care management, each clinical professional understands the complete member situation and provides the needed support in coordination with each individual program.

Integrated Care Management simplifies the member experience, saves them time and money, and improves health outcomes while delivering value-based savings to the plan through effective population management.



## Integrated Programs



### Health & Wellness

- Wellness Coaching
- Health Risk Assessment
- Wellness Challenges
- Newsletters
- Useful Blog Posts



### Interventional Disease Management

- Medical Gaps in Care
- Pharmacy Gaps in Care
- Non-Adherence
- Multiple Chronic Diseases
- Multiple Medications
- Educational Resources and Tools



### Utilization Management

- Professionally Recognized Utilization Review Criteria
- Utilization Review Software
- Precertification Review
- Concurrent Review
- Restrospective Review
- Medication Review



### Acute Care Management

- Transition of Care Coordination
- Medication Reconciliation
- Complex Case Management
- Site of Care Optimization

## Learn More about Magellan Rx Management Today

To learn more about how we can support your members through clinical programs, visit [magellanrx.com](http://magellanrx.com).